

MOANALUA ELEMENTARY SCHOOL
Orchestra Program with Mr. Hamano Fall 2011!

After School Enrichment
Violin/Viola/Cello/Bass

Beginning Orchestra I: Fall Session*

Days: Tuesday/Thursday → Grades 4-6

Time: 2:20pm-3:15pm

(August 30th – December 15th)

*No previous experience or audition required

Beginning Orchestra II: Fall Session**

Days: Tuesday/Thursday → Grades 4-6

Time: 3:20pm-4:15pm

(August 30th – December 15th)

**Completion of Beginning Orchestra I required

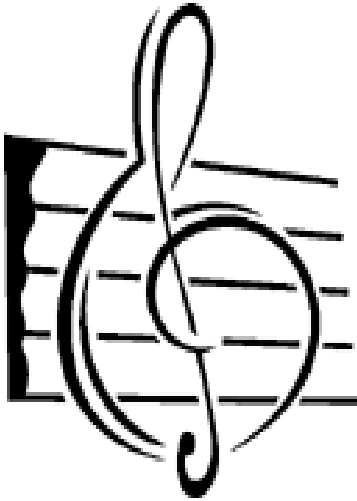
Preparatory Orchestra: Fall Session***

Days: Tuesday/Thursday → Grades 4-6

Time: 4:20-5:15pm

(August 30th – December 15th)

***Students will be placed by audition TBA



INFO: In order to participate in this semester's MES Orchestra Program, students and parents must read, fill out and submit all forms, contracts, and tuition by August 23rd, 2011. Forms available at: <http://www.moanaluapto.org/orchestra/>

COST: \$200 tuition for the Spring session. This includes instruction, performances, materials, and an instrument to use for the length of the course.

CONTACT: Mr. Hamano → jhamano@moanaluapto.org
